



SEOUL
MY SOUL



2025

INVEST SEOUL

ALL-IN-ONE
PACKAGE

invest
Seoul

2025 Invest Seoul ALL-IN-ONE PACKAGE

This project provides one-stop services-from preparing and executing foreign investments to post-investment management-with the aim of supporting overseas companies' expansion into Seoul and making Seoul a global business-friendly city.

Overview

✔ Application period

2025. 3. 24.(Mon)~2025. 11. 28.(Fri) Applications will be accepted quarterly until the budget is exhausted, and support will be provided selectively based on the eligibility criteria.

✔ Target

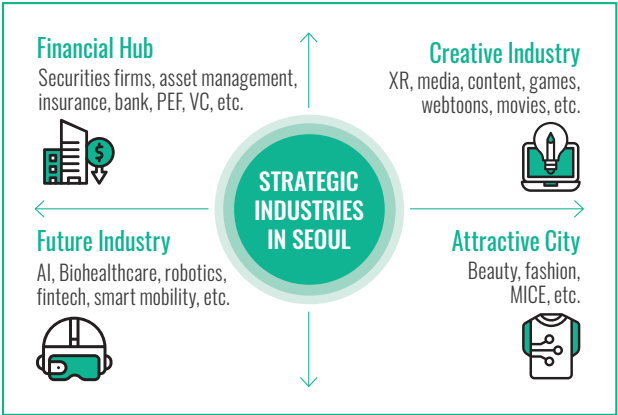
Pre-Support	Investment Support	Post-Support
Foreign companies planning to expand into the Seoul market between 2025 and 2026	Companies attracted foreign investment between December 2024 and November 2025	FDI companies in 2022 – 2024 that have received additional FDI in 2025

✔ **How to apply** Submission via website <https://investseoul.org>

✔ Support Criteria

Unit: million		
Pre-Support	Companies that have not received support in the past three years and align with Seoul's strategic industries.	Up to KRW 10
Investment Support	Support criteria vary depending on the type of company and the amount of foreign investment.	Up to KRW 20
Post-Support	FDI companies that have attracted foreign investment by at least KRW 100 million in 2025.	Up to KRW 5

※ For more details, please refer to the recruitment announcement



Contents

Category		Details	Support Limit
Pre-Support		Market research for expansion into the Seoul market	Up to KRW 10 million * Up to KRW 5 million per category
		Domestic legal review related to foreign investment	
		Rental costs for liaison offices	
Investment Support	Business Support	Consultation for Labor & Recruitment	Up to KRW 15 million
		Consultation for Legal services	
		Consultation for Tax & Accounting	
		Consultation for Intellectual property rights (IPR)	
		Consultation for Korean residency visas & Business model development	
	Settlement Support	Office rent (monthly lease) and co-working space usage fees	Up to KRW 5 million
		Relocation services including moving, insurance, etc.	
	Business-based Support	Consulting for licensing, certification standards, etc.	
		Marketing including promotional material production, etc.	
	Post-Support	Select a support category from business support, settlement support, or business-based support	

Process



Prepare supporting documents after processing service provider payments

Corporation(or a proxy)



Submit the required documents via the website <https://investseoul.org>

Corporation(or a proxy)



After reviewing documents, a subsidy will be provided

Invest Seoul

Required Documents

Pre-Support **Common Documents**

- ① Application & Information usage agreement
- ② A copy of the corporate bank account
- ③ Certificate of Corporate Registration or Business Registration Certificate
- ④ Letter of Intent for Expansion into Seoul

Pre-Support **Expense Supporting Documents**

- ① A copy of service contract or estimate with a service provider in Korea
- ② A copy of business license or Business Registration Certificate of the agent
- ③ Report of service use result(with evidential documents)
- ④ A copy of transfer statement of service fee and receipt

Investment Support, Post-Support **Common Documents**

- ① Application & Information usage agreement
- ② A copy of the corporate bank account
- ③ Certificate of Corporate Registration
- ④ Business Registration Certificate
- ⑤ Certificate of Registration of a Foreign-invested Enterprise or Certificate of Stock Subscription Deposit
- ⑥ FDI Report or Securities Acquisition Report
- ⑦ Foreign Exchange Purchase Certificate

Investment Support, Post-Support **Expense Supporting Documents**

- ① A copy of service contract or estimate, A copy of lease contract
- ② A copy of business license or Business Registration Certificate of the agent
- ③ Report of service use result(with evidential documents)
- ④ A copy of transfer statement of service fee and receipt

※ If the common documents are incomplete, the application will be automatically canceled, and if the supporting documents for expenses are insufficient, additional documents may be requested.

How to Submit



Invest Seoul
Projects



Apply



Click All-in-One
Package thumbnail



Scan to Submit

Seoul City INCENTIVES

Cash Grants

Up to 50% of the FDI amount in grants, in compliance with FDI and employment conditions over 5 years

- ☑ The purchase cost or rental fee for land or buildings
- ☑ The purchase cost of capital goods and research equipment and materials, the installation fee for infrastructure, etc.

Employment and Training Subsidies

Foreign investment ratio of 30% or more, with up to KRW 200 million in support for new employment and training within 5 years after investment

- ☑ If the number of regular employees exceeds 5 in 2024, up to KRW 1 million per person per month will be provided for a maximum of 6 months

Tax Exemption and Reduction

Companies located in individual-type of Foreign Investment Zones with an investment of over USD 2 million

- ☑ Reduction and exemption acquisition tax and property tax: The tax amount subject to cuts and exemption × 100% or the tax amount subject to reduction and exemption × 50%
- ☑ Exemption of tariffs, individual consumption tax, and value-added tax: Capital goods introduced in response to the investment declaration by foreigners

Designating of Foreign Investment Zone

When investing with a foreign investment ratio of over 30%, investing more than the total support for building rent, or investing more than 100% of the land or building price

- ☑ Rental fee subsidy: Up to 50% of the rent (excluding rental deposit)
- ☑ Duration: Within the occupancy period, up to 5 years

Seoul Financial Hub Occupancy Support

Providing office space in Yeouido for overseas financial companies newly entering or re-entering Korea

- ☑ Support for networking events among financial institutions such as banks and investment firm
- ☑ Access to shared spaces including meeting rooms, seminar rooms, and similar facilities
- ☑ Website: seoulfnhub.kr

LOCATION

[03188] 6F Seoul Global Center, 38, Jong-ro, Jongno-gu, Seoul, Republic of Korea
[Jonggak Station, Subway Line 1, Exit 6]



INVEST SEOUL Global Corporate Team

TEL : +82-02-6361-4148
E-mail : mslee75@sba.seoul.kr
Website : investseoul.org



 **facebook** | facebook.com/investseoulcenter

 **linkedin** | linkedin.com/company/invest-seoul

 **youtube** | youtube.com/investseoul